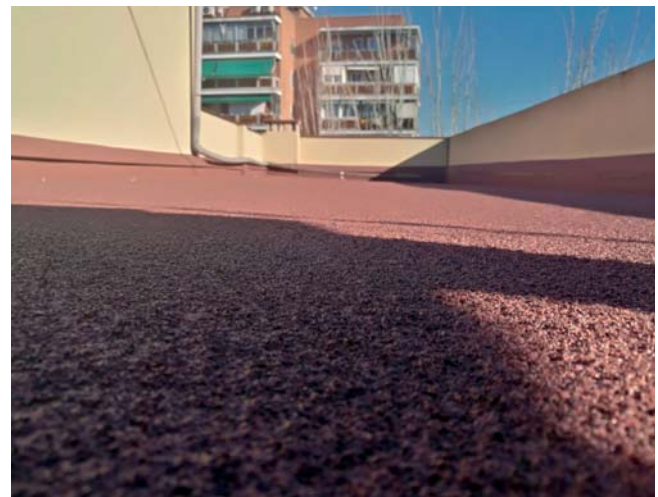
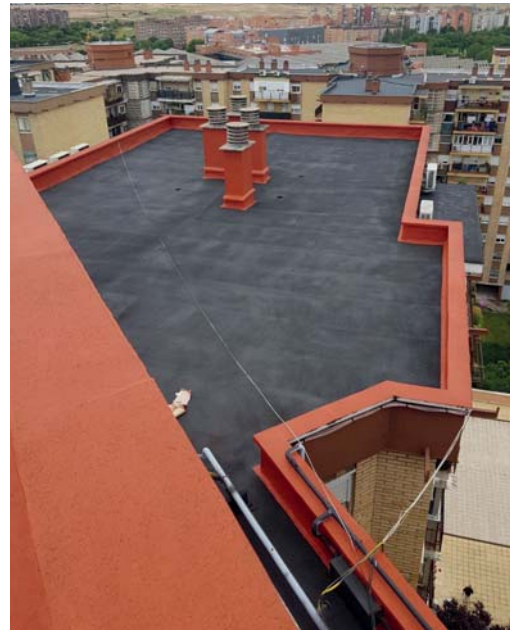
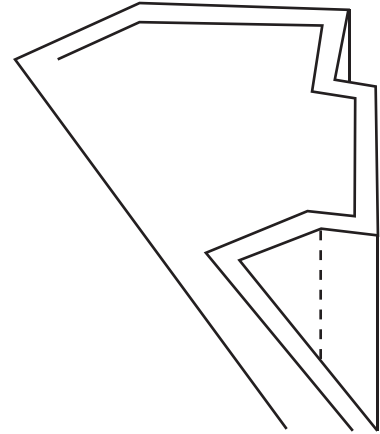


Waterproofing MAP / Extrafine MAP





MAP Sprayed Recycled Rubber

MAP is a **spray-applied waterproof product made of recycled rubber particles** bound together with additives for waterproofing roofs and façades.

Under request, a MAP-F version that has been specifically formulated to withstand extreme cold temperatures, can be supplied.

Alternative to bituminous membranes with three key advantages:

- **Application issues and leakage risks on critical points such as corners, edges, etc. are reduced** in comparison with bituminous membranes that resort to reinforcing patches, folds, etc. MAP is seamless and flexible.
- **Spray-applied** on any shape and substrate.
- It is **waterproofing and finishing coating at the same time** as it is UV resistant.



- **Easily spray-applied. No need to heat it for its application.**
- **UV resistant and flexible even under low temperatures.**
- **B_{roof} fire reaction.**
- **High adherence to almost any substrate, no matter its shape.**
- **Seamless, no patches.**
- **No need to either use reinforcing meshes or heavy rolls during installation.**
- **Can be covered with cement, ceramic tiles or similar.**
- **Suitable for renovation of damaged or cracked bituminous membranes.**
- **Waterproofing and/or water vapour barrier on façades, cellar walls, etc...**

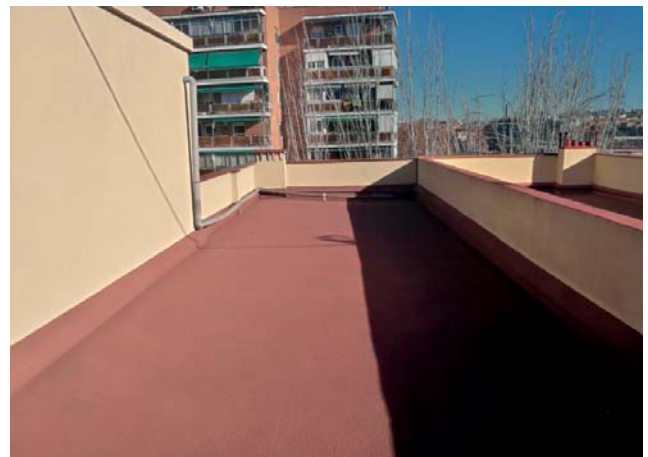


Watertightness Certified by ENAC Accredited Laboratory [UNE-EN 1928:2000]

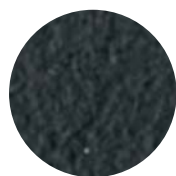
- Appearance: **COARSE**
- Thermal Conductivity [UNE-EN 12667:2002]:
0.212 W/mk
- Fire reaction [UNE-EN 13501-5:2007]:
B_{roof} [t1]
- Slipperiness [UNE-ENV 12633:2003]:
Class 3 according to CTE DB SUA 1
[UNE-ENV 12633:2003]:
36+, low slipperiness
[ANSI A 137.1-2012]:
Coefficient of dynamic friction: 0.36
[DIN 51097:1992]:
32°, rate C group
[DIN 51130:2014]:
17.5°, R10 class
[ISO/DIS 10545-17:1998]:
Coefficient of dynamic friction: 0.93

Application thickness [2 layers]:
3 mm in total

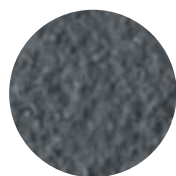
Coverage:
3 Kg/sqm in total



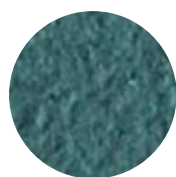
MAP colour chart



Negro



Antracita



Verde



Terracota

The **EXTRAFINE MAP** version is a less dense product than standard MAP and can be applied either on the whole surface or complementary to standard MAP in those areas hard to reach.

In essence, it is a waterproofing liquid product that can be applied by roller or brush.

Next page...

Instructions

The product can be applied by either a **gravity fed spray-gun** or by a **product pump with an automatic spray-gun**.

The product installation requires **two or more layers**.

- Total drying: variable, **12-72 hours**
- Installation temperature: **+5°C to + 45°C**
- Coverage: **3 kg/sqm for a total thickness of 3 mm [applied in 2 layers]**

Packaging

15 kg. plastic bucket/pail
540 kg. pallet/skid [36 buckets/pails]



* **The colours of this chart are just indicative** and might be different to true-colours depending on the type of paper, printer or screen that shows them. Accurate colours can be found in the certified official sample folder.

Request official samples.

For special colours, check its availability.





EXTRAFINE MAP

Waterproofing product applied by roller or brush. Made of water-based resins, solvent-free.

Applications

- **Waterproofing for flat or pitched roofs, terraces, walls, etc.** It can be left exposed without protection as it is ultraviolet sunlight resistant. It can also be combined with VIPEQ corkspray to increase thermal insulation, or other VIPEQ products depending on the required performance.
- Waterproofing for **bands, gutters, etc.**
- Waterproofing and sealing around **drainages, chimneys, etc.** for waterproofing solutions of standard MAP.
- Appearance: **VISCOUS LIQUID**
- Colour: **WHITE STANDARD**
[check for other colours]
- Coverage: **1 Kg/sqm for layer**

Characteristics

- **Completely waterproof/watertight, elastic,** high mechanical resistance and good resistance to temperatures between -15°C to +105°C. Good crack-bridging.
- Liquid product that adopts **any shape.**
- **Resistance to water, alkali,** etc.
- Solvent-free.

Substrates

The substrate has to be clean, dry and free of pollution that can hinder the product adherence. Substrate humidity must not be higher than 4%. It is not convenient to apply the product under risk of extreme cold temperature or rain.

It can be applied on any type of substrate providing it is in good condition, except for polyethylene sheets or glazed surfaces where adherence may be limited.

Old membranes, dirt, grease, oil, organic substances and dust must be removed mechanically.

Packaging

15 Kg. plastic bucket/pail

Instructions

- Apply a 1 kg/sqm first layer of **EXTRAFINE MAP** by roller or brush.
- Lay a fiberglass MAT reinforcement [density 150/300 g/sqm] on that layer.

NOTE: VIPEQ can provide the fiberglass MAT.



- Apply a 1 kg/sqm second layer of **EXTRAFINE MAP** by roller or brush on top of the MAT completely covering it without pores and without overloading it.
- Leave the product until it is completely dry and hard, not only superficially but also at its core, so the product becomes fully waterproof.

Note: Check the Extrafine MAP User Guide for further info about the product application.