



Waterproof and spray-applied membrane
made of recycled rubber

MAP / MAP-F



MAP / MAP-F

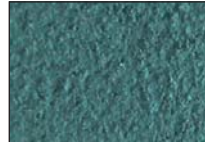
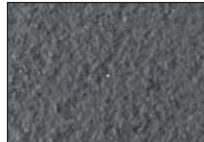
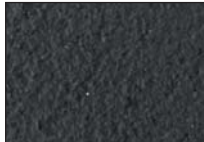


MAP is a spray-applied waterproof membrane made of recycled rubber particles bound together with additives for waterproofing roofs and façades.

Under request, a MAP-F version that has been specifically formulated to withstand extreme cold temperatures, can be supplied.

SPECIFICATIONS

- Range of colours available (black, anthracite, green and terracotta).



- Certified Water-tightness. Test carried out by ENAC European Accredited Laboratory.



APPLICATIONS

- Waterproof product for flat roofs, industrial roofs, terraces, pitched roofs, on fiber cement boards, steel sheets, asbestos encapsulation, etc.
- As a repairing product for damaged asphalt/bitumen membranes, cracked or worn out by sunlight.

CHARACTERISTICS

- The estimated performance of 3 mm. thick MAP is 3 kg/sqm. It is applied in layers up to 1-1.5 mm. thick. Each layer must be dry before application of the next layer, and drying times must be observed.
- Spray-applied and seamless membrane stuck to the substrate, so leakage risk is reduced due to incorrect jointing.
- UV solar beams-resistant.
- Self-extinguishable fire performance, B_{roof} . It does not carry flame or combustion.
- It is non-slippery. Class 3 according to CTE-DB SUA.

PACKAGING

15 kg. plastic pail. 540 kg pallet (36 pails).

EXTRAFINE MAP



EXTRAFINE MAP is a waterproofing product applied by roller or brush, made of water based resins without solvents.

APPLICATIONS

- Waterproofing for flat or pitched roofs, bands, gutters, around drainages, chimneys, etc.



CHARACTERISTICS

- Off-white, grey, and other colours available.
- UV solar beams-resistant.
- Estimated coverage of 1 kg/sqm for each layer. It can be reinforced with fiber-glass MAT.
- Completely waterproof/watertight, water and alkali resistant. Solvent free.

PACKAGING

15 kg. plastic pail. 540 kg pallet (36 pails).

Request official samples

