



SPRAY CORK Coatings



F08 / F09



- Ecofriendly decorative Spray Cork coating for long-lasting protection and renovation of walls and facades.
- Finish coating for external insulation systems, VIPEQ THERM EIFS.

FORMULATION

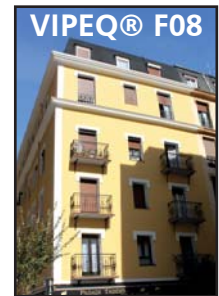
Mixture of selected cork particles with different types of water based resins, mineral filler, stabilizer and special additives.

SPECIFICATIONS F08

Texture	GRAINY
Appearance	Doughy product
Colour	Brown, off-white, extrawhite and range of colours
Density	0.5-0.7 g/cm ³
Granulometry	0.5-0.8 mm
Fire reaction (UNE-EN 13501 :2002)	Bs2,d0 and Broof (t1)
Thermal conductivity (UNE-EN 12667:2002)	0.058 (W/mK) at 10°C
Application thickness (2 layers)	3 mm
Performance	1.8-2.0 kgs/m² (2.4 kg/m² extra-white)

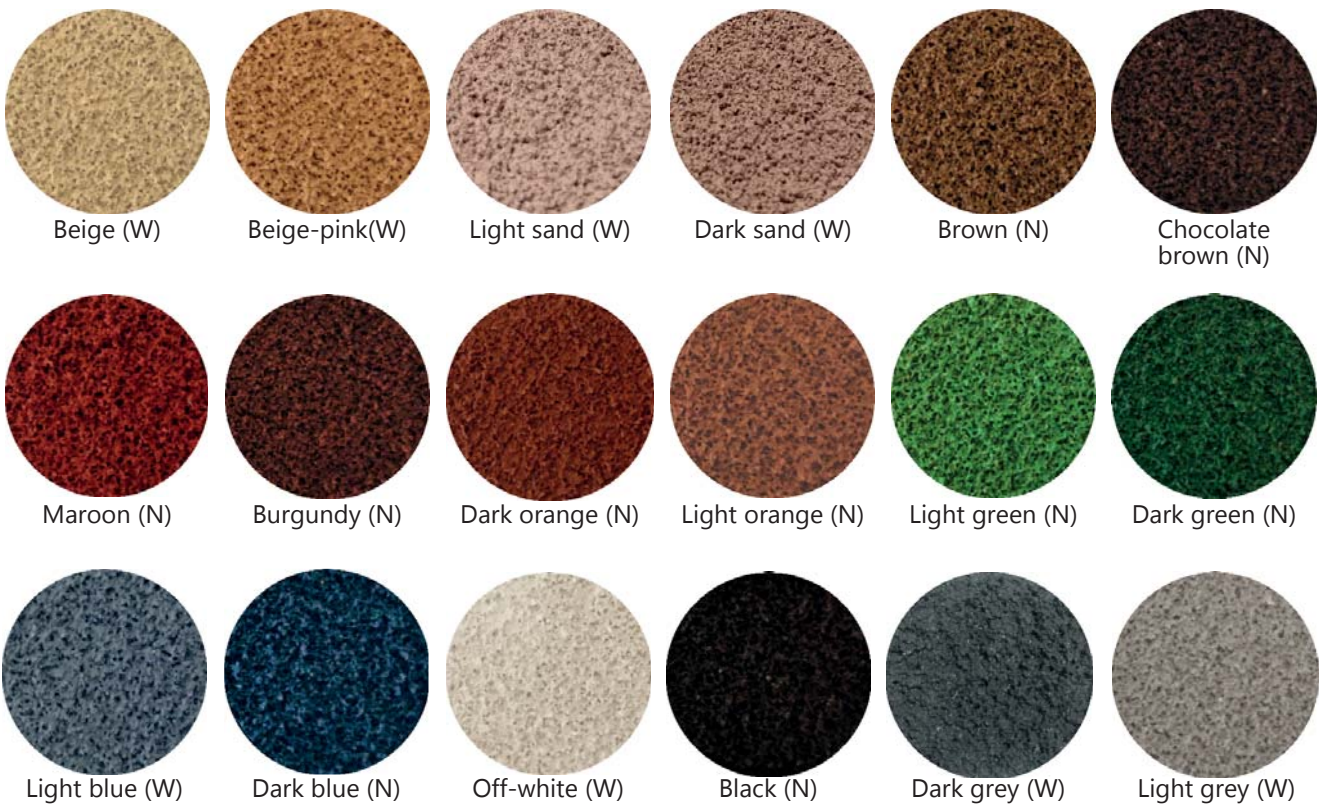
SPECIFICATIONS F09

FINE
Doughy product
Brown, off-white, extrawhite and range of colours
0.5-0.7 g/cm ³
0.4-0.5 mm
Bs2,d0 and Broof (t1)
1.5-2 mm
1.3-1.5 kg/m² (1.8 kg/m² extra-white)



Extra-white

F08 COLOUR CHART



*The colours of this chart are indicative and might be different to true-colours depending on the type of paper or printer. Accurate colours can be confirmed by the certified official sample book. Letter in brackets means the colour of the cork base: Natural (N) or White (W).

Request official samples



F08 / F09



FEATURES

- Permeable to water vapour.
- Waterproof to rainwater on walls.
- Flexible, prevents retraction fissures. High adherence on most substrates.
- Contributes to thermal insulation. Continuous coating on thermal bridges.



INSTRUCTIONS FOR USE

The product must be applied by spray-gun in two or more layers. Estimated drying time between layers is 24h, although it varies depending on ambient humidity and temperature.

- Dry touch: 30 minutes (Ambient temperature 20°C)
- Total drying: 12-24 hours
- Application temperature: from +5°C to + 45°C

PACKAGING

12 kg. plastic pail. 432 kg pallet (36 pails).



Extra-white

F09 / F10 COLOUR CHART



Beige (W)



Beige-pink (W)



Light sand (W)



Dark sand (W)



Brown (N)



Chocolate Brown (N)



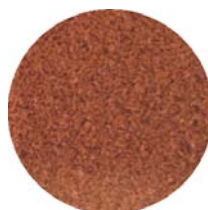
Maroon (N)



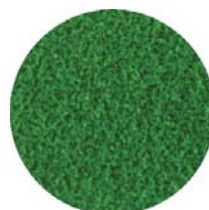
Burgundy (N)



Dark orange (N)



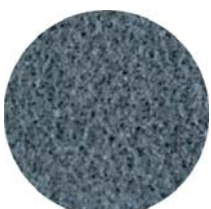
Light orange (N)



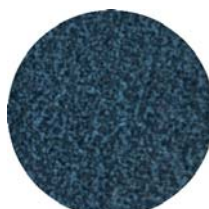
Light green (N)



Dark green (N)



Light blue (W)



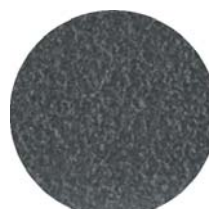
Dark blue (N)



Off-white (W)



Black (N)



Dark grey (W)



Light grey (W)

*The colours of this chart are indicative and might be different to true-colours depending on the type of paper or printer. Accurate colours can be confirmed by the certified official sample book. Letter in brackets means the colour of the cork base: Natural (N) or White (W).

Request official samples

VIPEQ® - v.4_20/07/2020 (this version replaces and revokes previous versions)
Pol. Empresarial La Estrella. C/ Berroa 2, Oficina 110 - 31192 TAJONAR. Navarra. T +34 948 85 22 95
www.vipeq.eu • informacion@vipeqhispania.com • info@vipeq.es



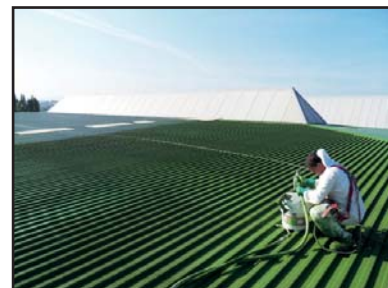
F10



- Waterproofing and insulating coating for most types of roofs (asphalt membranes, steel sheets, fibre cement).

For fully waterproofing performance VIPEQ F10 is applied combined with a previous application of two layers at right angle of ELASTOMERO PQ. Following this procedure, an impermeable to water vapour, waterproofing and insulating coating is achieved.

- Natural coating made of granulated cork with decorative, protective, insulating and waterproofing characteristics.



SPECIFICATIONS

VIPEQ F10 is a version of F09 with additives that improves its waterproofing properties. Its characteristics are similar to F09 except it is waterproofing and impermeable to water vapour.

CHARACTERISTICS

Additional characteristics of F10 in relation to F09 are:

- Waterproof and impermeable to water vapour on walls and roofs previously applying ELASTOMERO PQ.
- F09 and F10 share the same colour chart.

PACKAGING

12 kg. plastic pail. 432 kg pallet (36 pails).

CORK FIX



Adhesive cork emulsion for multipurpose applications, based on acrylic resins, mineral fillers and additives that can be used for:

- Adhesive of thermal insulating panels (EPS, XPS, MW, WF and agglomerated cork) included in external thermal insulation system VIPEQ THERM EIFS.
- As a regularising and protective layer on thermal insulating panels of VIPEQ THERM EIFS.
- As a regularising and coating layer prior the finishing layer of VIPEQ F08 o VIPEQ F09.



CHARACTERISTICS

This product can be applied by trowel or by spray gun.

CORKFIX performance depends on the layer thickness. For a regularising layer on thermal insulating panels, a performance of 2 kg/m² is estimated.

PACKAGING

12 kg. plastic pail. 432 kg pallet (36 pails).